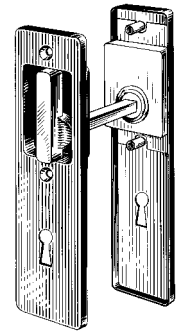
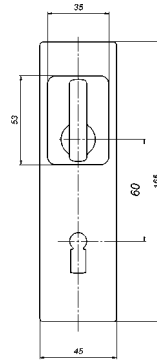
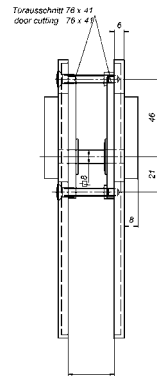


4969 Hebeldrucker mit 2 Schildern
 lever handles with 2 plates
 103943
 103941

Msp
 Msmcr



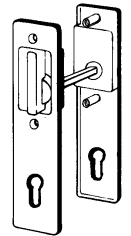
4969



2 Schrauben M5
 normal für Türstärken 27 – 33 mm
 auf Wunsch für andere Türstärken
 2 screws M4
 standard for door thickness 27 – 33 mm
 on request for other door thickness

4969 Z Hebeldrucker mit 2 Schildern
 lever handles with 2 plates
 103946
 103944

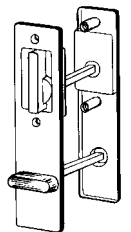
Msp
 Msmcr



4969 Z

4969 WC Hebeldrucker mit 2 Schildern
 lever handles with 2 plates
 103952
 103950

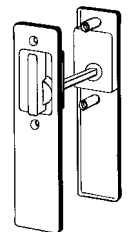
Msp
 Msmcr



4969 WC

4969 F Hebeldrucker mit 2 Schildern
 lever handles with 2 plates
 103949
 103947

Msp
 Msmcr



4969 F

Diese Garnituren passen zu Serien 1069 und 969.
 These sets are matching with series 1069 and 969.